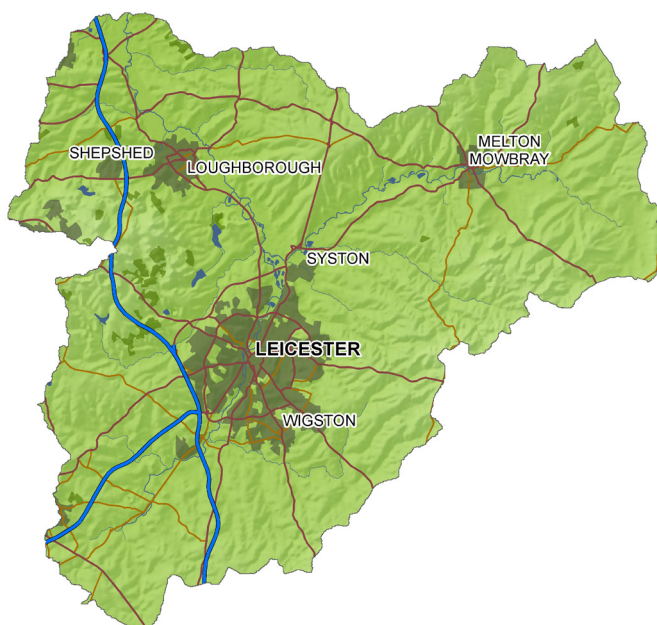




# THE SOAR CATCHMENT PARTNERSHIP

IMPROVING THE WATER ENVIRONMENT THROUGH EFFECTIVE PARTNERSHIP WORKING

RIVER SOAR CATCHMENT AREA



## THE SOAR CATCHMENT

Situated in the East Midlands, the River Soar is the main river in Leicestershire and flows through the heart of Leicester as well as several smaller market towns before joining the River Trent. Much of the main river is managed for navigation. It is home to an array of wildlife, including water birds, a range of coarse fish and the endangered white-clawed crayfish.

## THE SOAR CATCHMENT PARTNERSHIP

The Soar Catchment Partnership was formed in 2014 and is hosted by Trent Rivers Trust. It comprises over 40 organisations all working towards a shared vision for the catchment.

“A Soar catchment that has a sustainable and diverse water environment that benefits people, the natural environment and the economy of the local area. A catchment in good ecological condition with improved resilience to climate change, flooding and pollution events. As a Catchment Partnership for the Soar, we will work together using innovation and cooperation, to capitalise on the opportunities presented and find solutions to the challenges faced.”



# DEMONSTRATING IMPACT THROUGH PARTNERSHIP WORKING

## Effective partnership working and knowledge sharing

Since its 2014 formation, the Partnership has gone from strength to strength. From an existing core of Trent Rivers Trust and the Environment Agency, the Partnership has almost doubled, which has helped to secure over £500,000 in additional funding to date to maximise the benefits to the environment and local communities.

Sharing lessons and successes across the wider river basin is vital so that positive impacts on the water environment can be maximised. Therefore, the Partnership is currently exploring opportunities to up-scale the Soar's successes; in particular its use of data, evidence and mapping with neighbouring catchments within the Trent.



TEENAGERS ENJOYING A SUNNY DAY ON THE SOAR  
© JIRI REZAC

## Targeting delivery and maximising impact

To target future work more effectively, the Partnership has already identified a need to be strategic about the use of data, evidence and mapping. Partners have therefore developed the 'Soar Data and Evidence Tool', which captures the key data sets relevant across the catchment, including: water quality, flood risk, economic deprivation, biodiversity, recreation and diffuse pollution. This data and evidence can be used to help secure future funding and resources.

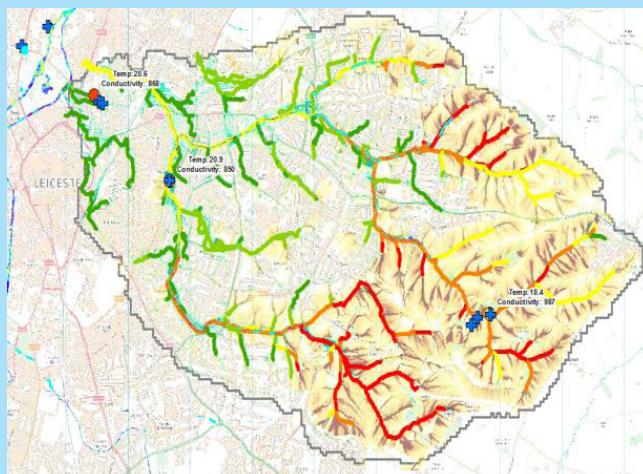
The Soar Catchment Partnership is one of five demonstration catchments that are part of WaterLIFE, an EC LIFE+ funded project which brings together communities, business and government to accelerate the implementation of the Water Framework Directive. WaterLIFE has helped to increase the Soar Catchment Partnership's capacity, so it is better able to deliver positive action to improve the water environment for people and nature.

For more details visit:

[www.waterlife.org.uk](http://www.waterlife.org.uk) and [www.trentriverstrust.org](http://www.trentriverstrust.org)



## Innovation, engagement and a track record of delivery



PREDICTED RISK OF SEDIMENT LOSS AND TRANSPORT FROM RURAL SOURCES IN THE SOAR

In 2015, the Partnership secured funding from Leicester City Council and the Local Enterprise Partnership to use an innovative 'fingerprinting' approach to work out where the silt that is currently polluting the Willow Brook catchment – as well as exacerbating flooding risk - is coming from, so that it can be tackled at source.

The Partnership has re-naturalised 50 metres of concrete channel at Humberstone Park in Leicester and delivered sustainable drainage schemes at five locations to date working with Leicester City Council. These interventions have reduced flood risk and improved water quality. In addition, they have improved or created over two hectares of habitat and resulted in 3,000 trees being planted so far.

The Partnership has also engaged with nearly 1,000 children; reinforcing positive messages around the water environment and helping to create a sense of shared ownership. A local pupil designed the Partnership's new logo earlier this year, in a schools' competition supported by Severn Trent Water.

Over 400 volunteers have so far given up time realising nearly 2,000 volunteer hours, getting involved in litter picking, guerrilla knitting and tree planting - activities which have all enhanced the catchment.



VOLUNTEERS LITTER PICKING ON THE RIVER SOAR  
© JIRI REZAC